



Who uses it?

The Jason's Cradle® MOB system is used globally in every military, commercial, rescue and leisure area within the marine sector.

The commercial units are fully SOLAS approved and for many years have been and continue to be the most respected MOB recovery, embarkation/disembarkation and evacuation system in the world.

Why do I need it?

Jason's Cradle® is designed to retrieve people quickly and horizontally from the water, thus reducing the possibilities of "dry drowning" now more commonly known as Circum Rescue Collapse. The horizontal lift for a MOB has now become critical in the modern marine world and by using the Jason's Cradle®, not only is this achievable, but it is one of the safest and quickest methods of retrieval for conscious and/or unconscious casualties.

Using Jason's Cradle® as your preferred MOB recovery system allows operators to retrieve casualties who are unable to assist themselves due to injury or high freeboard.

How do I determine the type & size of Jason's Cradle® to suit my vessel?

The **Standard unit** is suitable for most vessels with up to 3m freeboard and is offered in three width options.

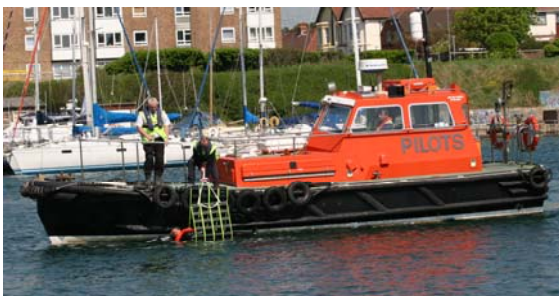
The **FRC Kit** is suitable for all Fast Rescue Craft and is offered in two width options.

The **Scramble net** is suitable for high sided vessels, rescue zones and mass recovery/evacuation.

The **Stretcher unit** is suitable for high side vessels, diver recovery and quayside rescue and is offered in two sizes.

Our **Bespoke Service** offers the flexibility to meet all your requirements by tailoring the Jason's Cradle® system to suit any vessel where the dimensions are outside the above provision of stock units.

MOB Recovery using the Standard Jason's Cradle®



- The Standard Cradle is simply fixed to the deck or rail to enable deployment within seconds
- The Standard Cradle can be easily rolled up for stowage
- Deployment of the Cradle forms a non-collapsible scoop
- The casualty is guided into the cradle head first
- A Strop and/or Hauling lines are pulled to close the loop
- A co-ordinated & methodical lift takes place & the casualty is retrieved by rolling onto the deck in the medically preferred horizontal position



Operating the Jason's Cradle® with high freeboard vessels is no problem using a block and tackle or davit crane system.

All Jason's Cradle® units carry our manufacturer warranty of 3 years excluding clips, strops, hauling lines, stowage bags and other additional fittings that carry the usual 1 year manufacturer's warranty.

Jason's Cradle® MOB systems

+44 (0)1202 874365

www.jasonscradle.co.uk

**SOLAS
APPROVED**

Manufactured by: Land and Marine Products Ltd

6 Aerial Park, Uddens Trading Estate, Wimborne, Dorset BH21 7NL T: +44 (0)1202 874365 F: +44 (0)1202 876296 E: info@jasonscradle.co.uk

MOB Recovery using the Jason's Cradle® FRC (Fast Rescue Craft) Kit

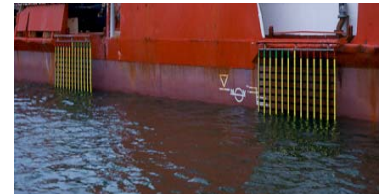


- The FRC kit consists of a Jason's Cradle® with stowage bag and a fixing kit that enables the Cradle to be deployed on both the port and starboard side as required
- Deployment of the Cradle forms a non-collapsible scoop
- The FRC approaches the casualty slowly, keeping them on the windward side and the casualty is guided into the Cradle headfirst
- A stop is pulled to close the loop
- A co-ordinated and methodical lift takes place and the casualty is retrieved by 'rolling' him over the tube into the rescue craft in the medically preferred horizontal position
- Even with very heavy bodies the lift takes just a few seconds due to the Cradle's 2 to 1 mechanical advantage

MOB Recovery Using a Jason's Cradle® Scramble Net



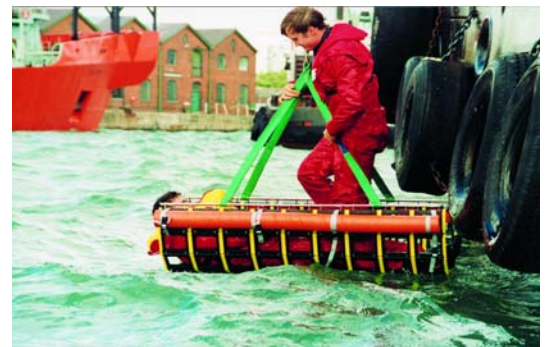
- The Jason's Cradle® Scramble Net is simply fixed to a drop-rail or to the deck to enable deployment within seconds
- The Scramble Net can be easily rolled-up for stowage
- The Scramble net is rigid so it does not deform or snag when it is deployed
- The easily accessible foot and handhold make climbing easy for the man overboard
- If the casualty is too weak they can be hauled aboard horizontally without being crushed in the net
- Large numbers of passengers and crew may simultaneously disembark in the event of an emergency



MOB Recovery Using a Jason's Cradle® Floating Stretcher



- When used as a floating stretcher, the Jason's Cradle® is equipped with flotation tubes and stops, which can be adjusted to prevent snatching from a pitching vessel
- A rescue swimmer can be lowered into the water to retrieve an unconscious casualty
- Both rescuer and casualty can be recovered on the stretcher at the same time
- The Stretcher can be operated from a davit crane or block and tackle



Jason's Cradle® MOB systems

+44 (0)1202 874365

www.jasonscradle.co.uk

**SOLAS
APPROVED**

Manufactured by: Land and Marine Products Ltd

6 Aerial Park, Uddens Trading Estate, Wimborne, Dorset BH21 7NL T: +44 (0)1202 874365 F: +44 (0)1202 876296 E: info@jasonscradle.co.uk

Issue 4